

RedAnt M-Port

The most flexible way to link external applications and data to Mamut



RedAnt M-Port enables implementation of business processes that are not supported by the out-of-the-box functionality in Mamut. M-Port is an advanced middleware solution, that can quickly link external applications and data to Mamut.

In its most simple form, data is imported or exported in the different Mamut Business Software modules, but the application can just as easily be used for communicating with an external warehouse, a web shop or an order scanner. Please read on for even more examples of M-Port workflows we have already created.

Awarded by Mamut as the best add-on for Mamut Business Software in Europe 2011!

RedAnt M-Port can best be compared to a toolbox of building blocks, from which the required bits and pieces can be selected to support every business process. Together, these components form a *workflow*, a technical description or model of your business process.

Each workflow has a source and a target connection and Mamut can be one of those – or even both! Other sources or targets can, for instance, be a database (Microsoft SQL Server, MySQL), a file, an FTP server, a SOAP web service or an e-mail message.

M-Port supports all main modules in Mamut: amongst others, activities, products, contacts and contact persons, journals, orders and time sheets. To read or write the data, we

support virtually any current format, such as Excel sheets, Word documents and PDFs. More technical links can be made using CSV, XML and even fixed-width ASCII files. Using an additional module, EDI messages can also be supported.

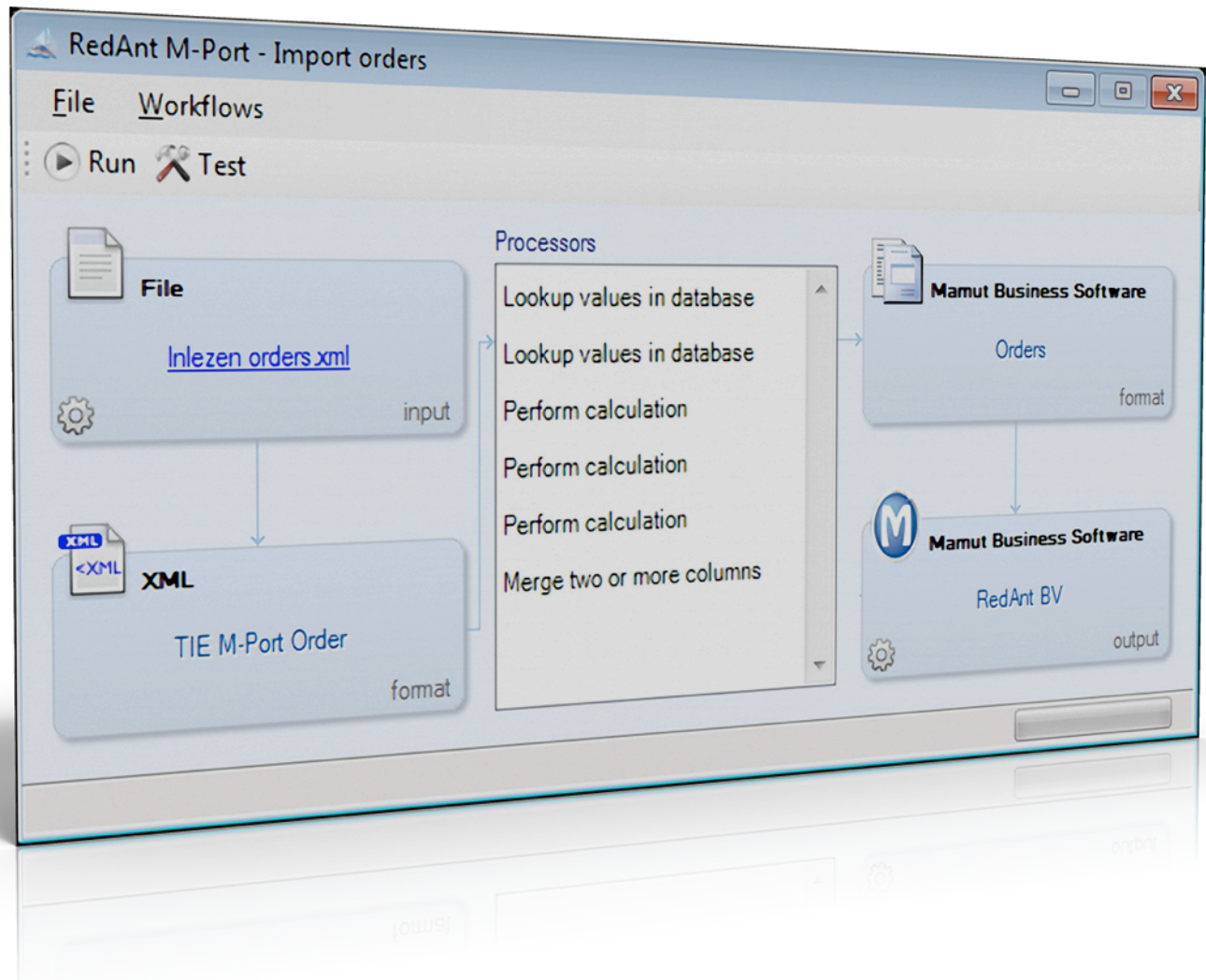
M-Port is completely adaptable to the requirements of external applications, so the need to manually correct data that goes in or out of your database can be eliminated. We can automatically merge, split or even perform advanced calculations on the data.

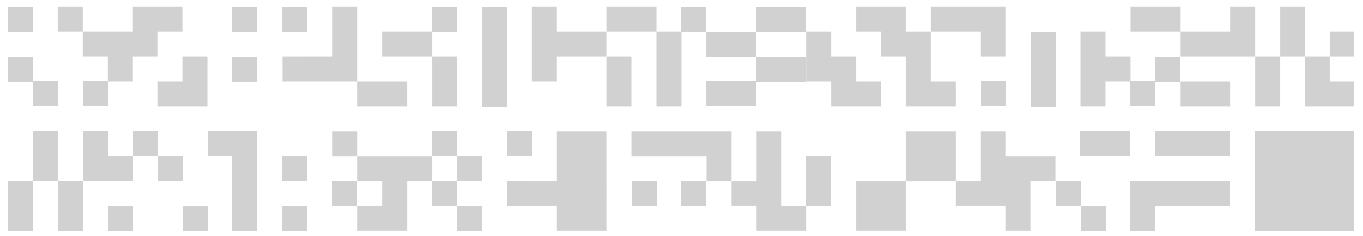
Naturally, all M-Port workflows can be planned as a scheduled task in Windows.

Using M-Port, RedAnt makes automating complex business processes not only possible, but also affordable. We have fixed prices for implementing workflows, so we will never surprise you financially. And, of course, we guarantee M-Port's proper workings, for example when Mamut is updated.

Pricing

Thanks to M-Port's modular approach, we are able to develop workflows for a fixed fee of € 799 per workflow. In addition, M-Port comes with a required service agreement of € 44 per month, payable annually upfront, regardless of the number of workflows.





Example Implementations

M-Port is used by over 100 customers, for a wide range of links. Please find below a number of examples of workflows that have been implemented using M-Port:

- Update product data, inventory and prices from suppliers, such as Vodafone, Extendas, and large ICT wholesalers such as Copaco and Techdata
- Importing of time sheets from Microsoft Project and AtTask
- Low stock report and purchase recommendation report to Excel
- Automatic delivery of new invoices through personalised e-mails
- Ticketing system via Mamut, including the automatic sending of e-mails on changes in activities
- EDI via TIE and SPFI
- Order scanning and picking using a bar code scanner
- Export orders to external warehouses using, e.g., GLS, S&H, Datamail, and All-in Logistics
- Export packing slips to TNT Parcelware, DHL, DPD, UPS, et cetera
- Link data to/from web sites and web shops, e.g., Interspire, custom PHP/MySQL
- Copy products, orders and other information between different company databases

System requirements

Mamut Business Software version 12 or higher is required. In addition, at least 1 GB of free RAM is required. The larger the amount of data that needs to be processed, the more RAM is required.

Reference Case

Tommy Teleshopping

Link to external warehouse and SAP

Tommy Teleshopping is the preeminent TV-retailer of The Netherlands, advertising on the majority of prominent commercial channels. Tommy Teleshopping develops and exploits home shopping formats and interactive services for TV and the internet.

Processing the thousands of orders that Tommy Teleshopping receives every month is done by their distributor's SAP system. SAP is the container for all payments, orders, delivery information, returns and debtors. Tommy Teleshopping utilises RedAnt M-Port to automatically transfer large amounts of data from SAP to Mamut for further processing. These include customers, payments, orders, returns/credit notes and match information between payments and invoices.

All data relevant to the financial administration of their business are linked together using these five workflows. Twice a week, the accounting department uses M-Port to download new data into Mamut. This allows Tommy Teleshopping to keep the registration of journals and accounts in Mamut up to date and keep track of sales progress per debtor.

Tommy Teleshopping's CFO about RedAnt:

RedAnt has worked with us closely throughout the decision process but also during the implementation, and supplied us with their extensive knowledge and insights. In addition, we have seen that using Mamut in combination with M-Port allows us to keep excellent track of the logistic processes that have been outsourced in our financial administration.

Head of the accounting department Corné Sterk about RedAnt M-Port:

M-Port is a very easy-to-use and straightforward application!

Specifications

Supported Mamut modules

- Activities
- Contacts
- Contact persons
- Currency register
- Employees
- Journals
- Orders
- Products
- Projects
- Purchase orders
- Time sheets

Supported data formats

- CSV
- EDI*
- Excel
- Fixed-width ASCII
- HTML (web)
- Mamut
- PDF (Acrobat)
- Word
- XML

**) with optional module*

Supported connections

- File
- Database (SQL Server, MySQL)
- E-mail
- Folders
- FTP server
- Mamut
- Web service (SOAP)



RedAnt BV
Laan van Chartroise 170
3552 EZ Utrecht
The Netherlands

T +31(0)30 244 3101
www.redant.nl/en/